

CLIVET SPA

Via Camp Lonc 25, Z.I. Villapaiera - 32032 Feltre (BL) - Italy
Tel. + 39 0439 3131 - Fax + 39 0439 313300 - info@clivet.it

CLIVET MIDEAST FZCO

Dubai Silicon Oasis (DSO) Headquarter Building, Oce EG-04 & EG-05, Dubai, United Arab Emirates.
Tel. +971564333784 - info@clivet.com

PRODUCT CATALOGUE

GUIDE 2022



40
agencies in Italy

630
employees in Italy
and abroad

75
countries we export to

50.000 m²
of plants in Feltre,
Belluno - Italy

6
branches: Great Britain, Germany, Spain,
Russia, UAE, India

2015
Clivet Live is born

140
service centres

2016
A Group Company of


FORTUNE GLOBAL 500
Midea Group #288 in 2020
44.1 B\$
Midea turnover



For 30 years we have been offering solutions to ensure sustainable comfort and the well-being of people and the environment

In 30 years of working on the design, manufacturing and distribution of air conditioning and handling systems, combining high efficiency with minimal environmental impact, Clivet has developed solutions to ensure sustainable comfort and the well-being of people and the environment. Designing and developing year-round air conditioning solutions with innovative technologies are part of Clivet's DNA, which means the company has always been ready for the future.

Our values in the residential, commercial and industrial sectors

Increasing comfort, saving energy and providing customers with the best value for the entire life cycle of the system: these are the values that inspire our systems for the residential, services and industrial sectors.

INCREASE
COMFORT
LEVEL

REDUCE
ENERGY
CONSUMPTION

REDUCE
TOTAL LIFE
CYCLE COST

CONTENTS

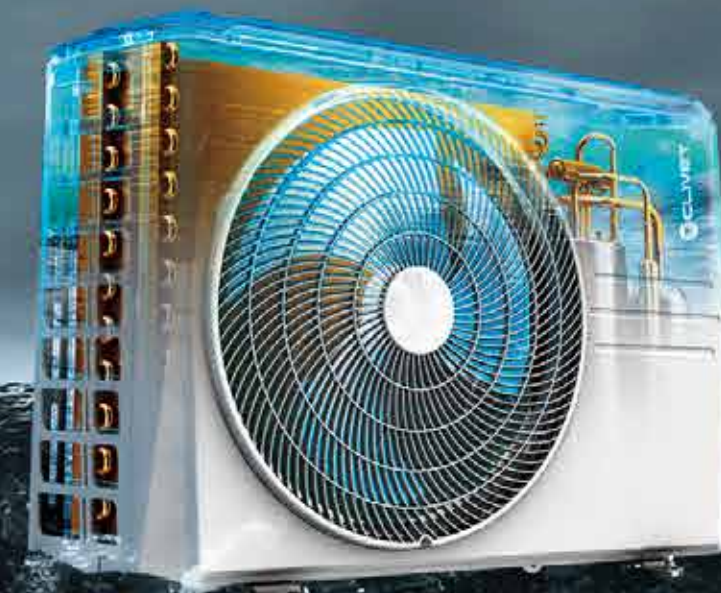
03

Forest Air
Conditioner

19

A6 Ducted Split
Air Conditioners

Forest Air
Conditioner



The unique anticorrosive golden coating on the heat exchangers can withstand the salty air, rain and other corrosive elements. It also effectively prevents bacteria from breeding and improves heat efficiency.

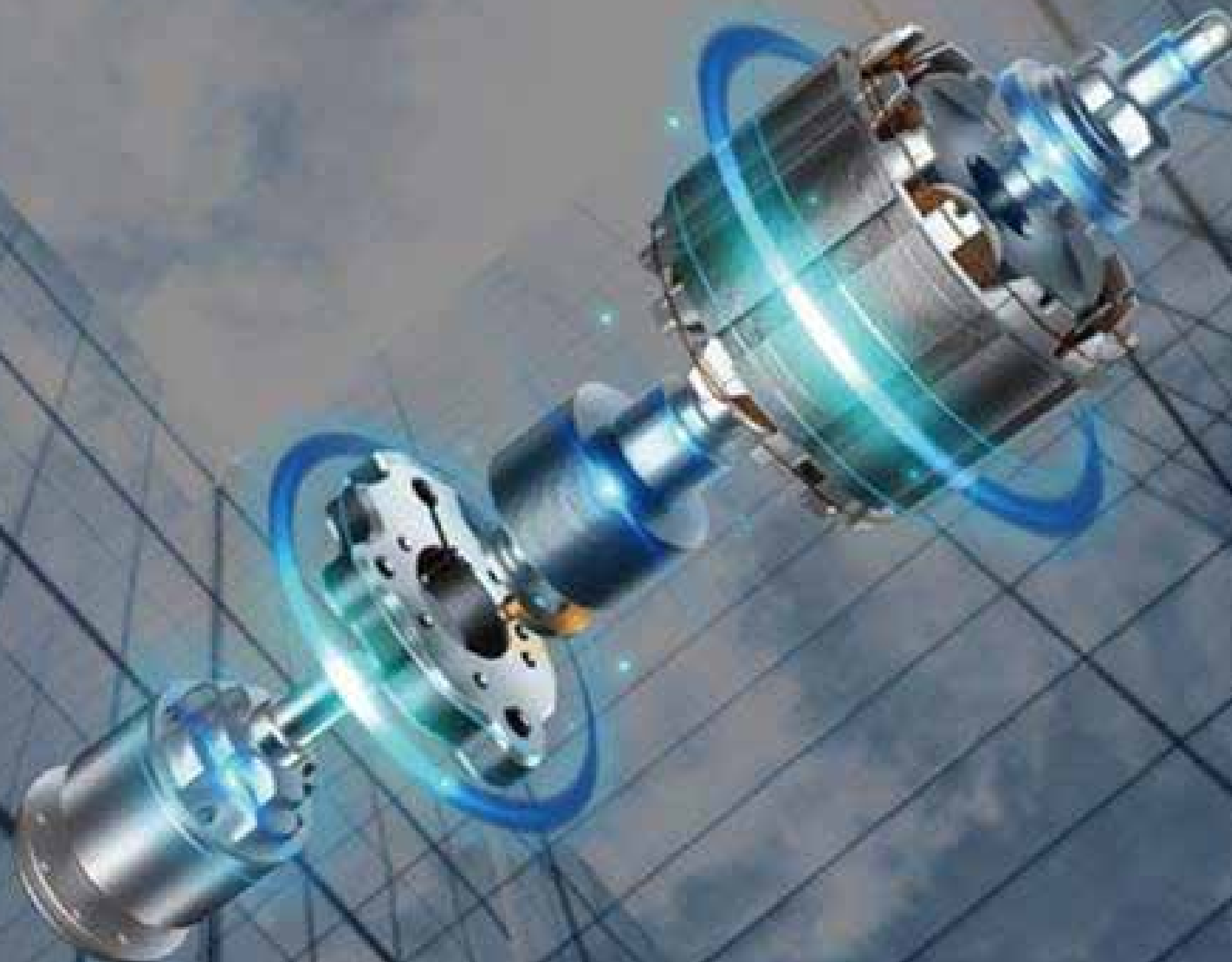
Golden Fin

Blue Fin

Cooling

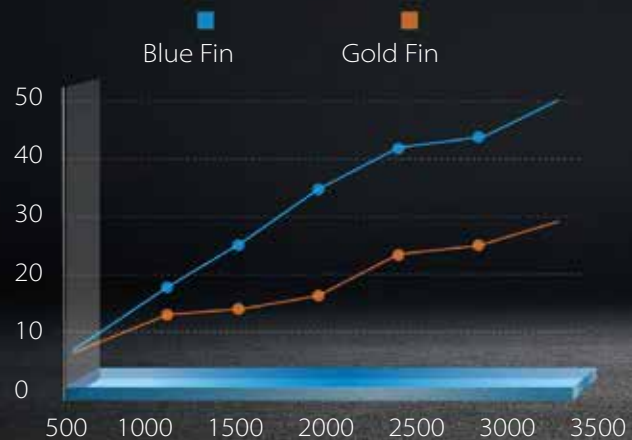
Durable Inverter Compressor

Equipped with a strong heart - the efficient and reliable compressor guarantees durable power.



Dry-wet cycle tests 3000 times (equivalent to using an air conditioner for 10 years): the golden fin still has good hydrophilicity (hydrophilic angle $\theta \leq 30^\circ$).

Contact Angle (°)



Test 1: 1000h neutral salt spray (equivalent to 10+ years of service life under normal conditions); protection level ≥ 9.5 , without perforation.

Test 2: Acid resistance tests for 30 minutes (equivalent to 10,000 times accelerated acid rain test); corrosion area $\leq 0.5\%$.

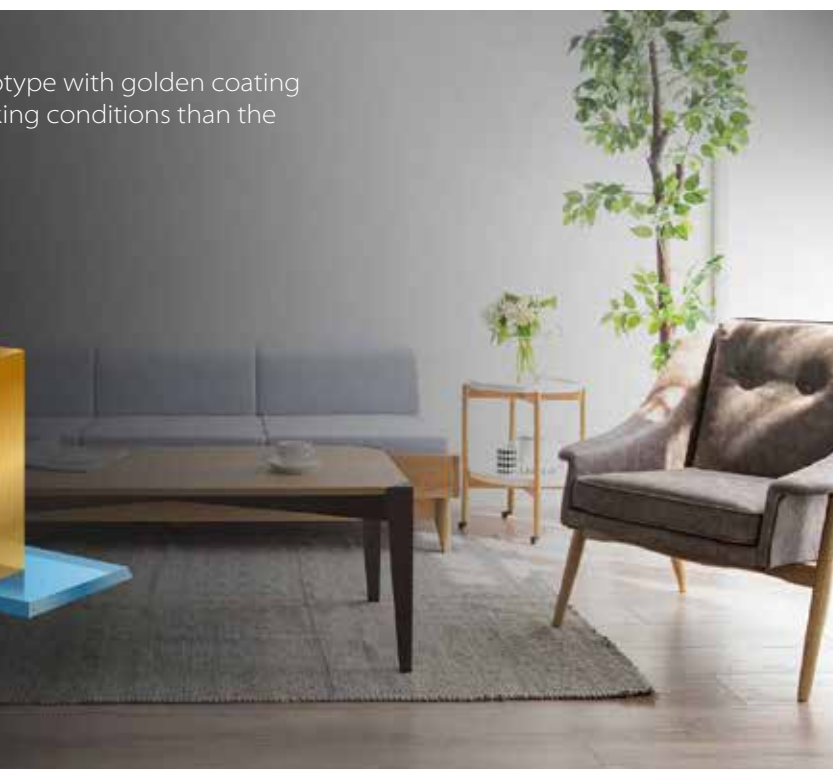
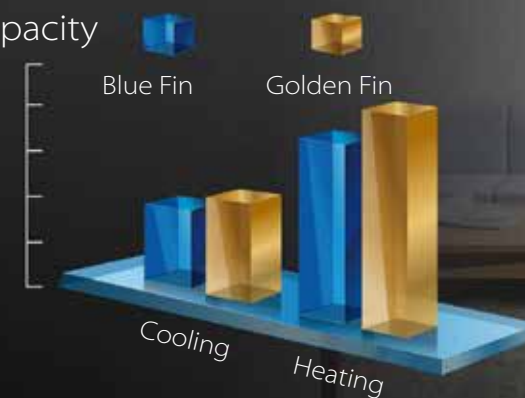
Fireproof Electronic Control Box

The electric control box uses ABS material with a 5VA flame retardant rating, and the outer surface is covered with sheet metal, which isolates the electric control box from fire.



After one year of operation, the prototype with golden coating shows better performance in all working conditions than the prototype with blue coated foil.

Capacity



Refrigerant Leakage Detection

The system will stop operation automatically to ensure safety once the refrigerant leakage is detected.



Error Code





Split Wall Mounted



ENERGY SAVING

Sleep Mode



HEALTHY

Dual Filter
High Density Filter
Cold Catalyst Filter
Self-Clean



RELIABLE

Golden Fin
Fireproof Electric Control Box
Refrigerant Leakage Detection



COOLING

Durable Compressor
High Efficiency Tube
Turbo

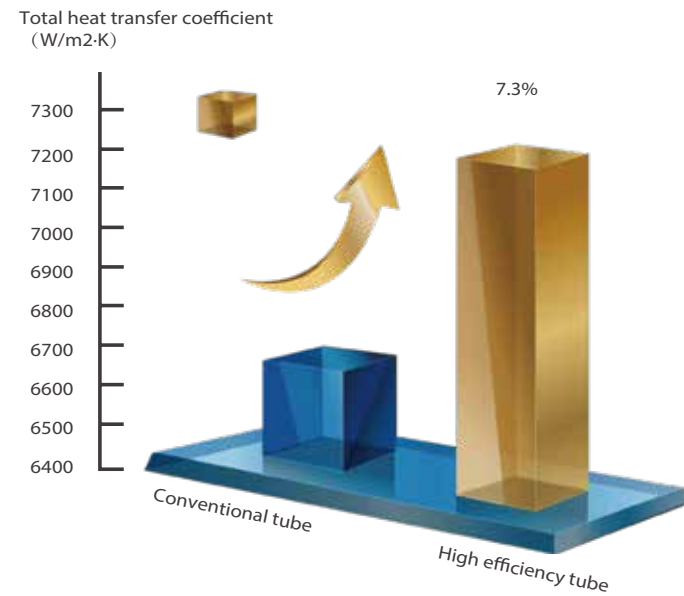


COMFORT

Louver Position Memory
Follow me
LED on/off operation

High Efficiency Tube

Increase the number of inner groove teeth from **45** to **58**, which enlarges the heat transfer area and increases heat transfer efficiency up by **7.3%**.



Energy Saving



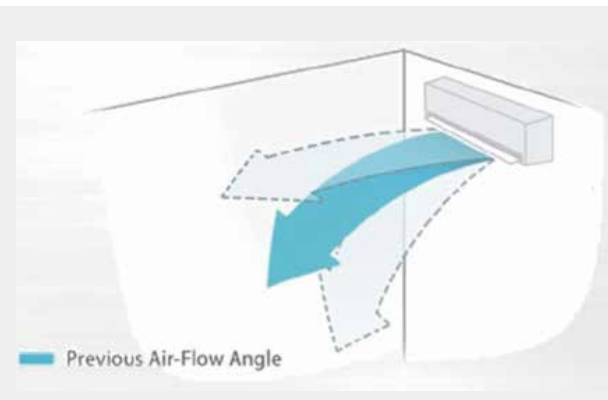
Sleep Mode

In cooling mode, the setting temperature rises 1°C (no more than 30°C) every one hour, 2 hour later the rising stops and indoor fan is fixed at low speed.
 In heating mode, the setting temperature descends 1°C (no less than 17°C) every one hour, 2 hour later the descending stops and indoor fan is fixed at low speed, and anti-cold-air function is available.
 The unit will quit sleep mode after running 8 hours and the system will keep running with final set temp.

Comfort

Louver Position Memory

When you start the unit next time, the angle of horizontal louver will automatically move to the same position as you set last time.



Follow me

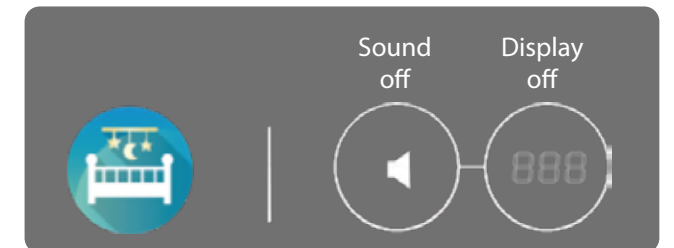
The room temperature sensor built in remote controller will detect the temperature around the remote controller, just like the air conditioner is following you.

Press the "Follow me" button on remote controller to select this function.



LED on/off operation Display & Sound off

Just the "LED" button to turn off the display and sound of buzzer, saving energy and ensuring you get a comfortable night's sleep.



Healthy

Dual Filtration

The Dual Filtration system thoroughly eliminates harmful substances, providing fresh and clean air to you.

STEP1: High Density Pre Filter

Dust



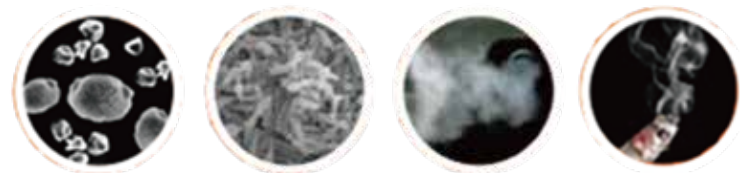
Dog Hair

Dead mite Feces

Fungus

STEP2: Micro Protection Filter

Pollen(Allergen), smoke, micro dust (under 0.3um)

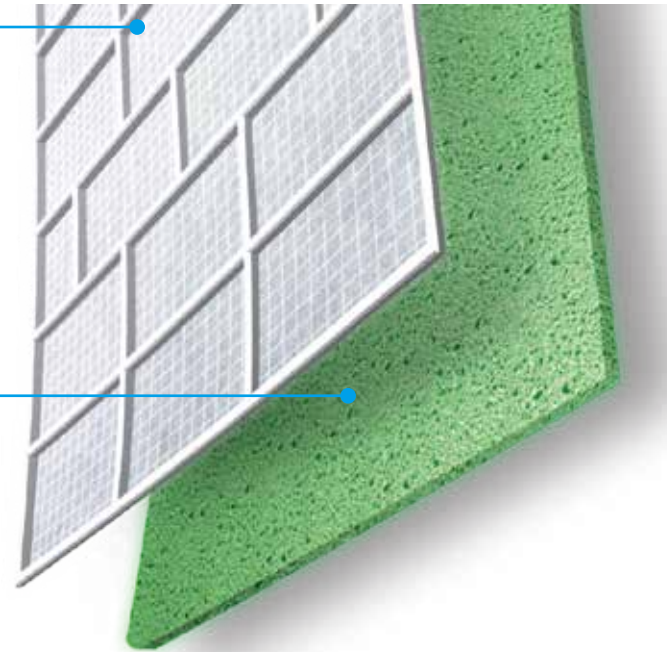


Flower pollen

Bacteria

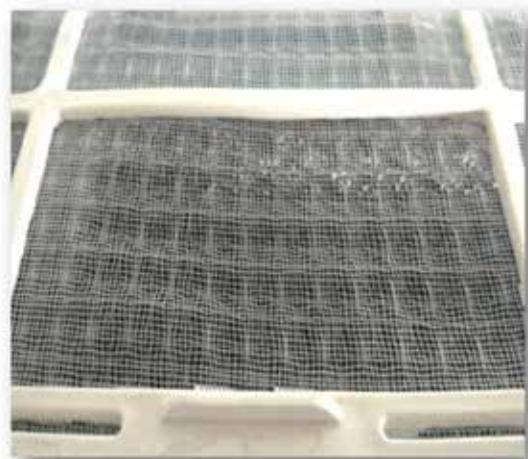
Car exhaust fumes

Smoke



High Density Filter

More smooth, and 50% higher in dust clean rate.



Ordinary filter



HD filter

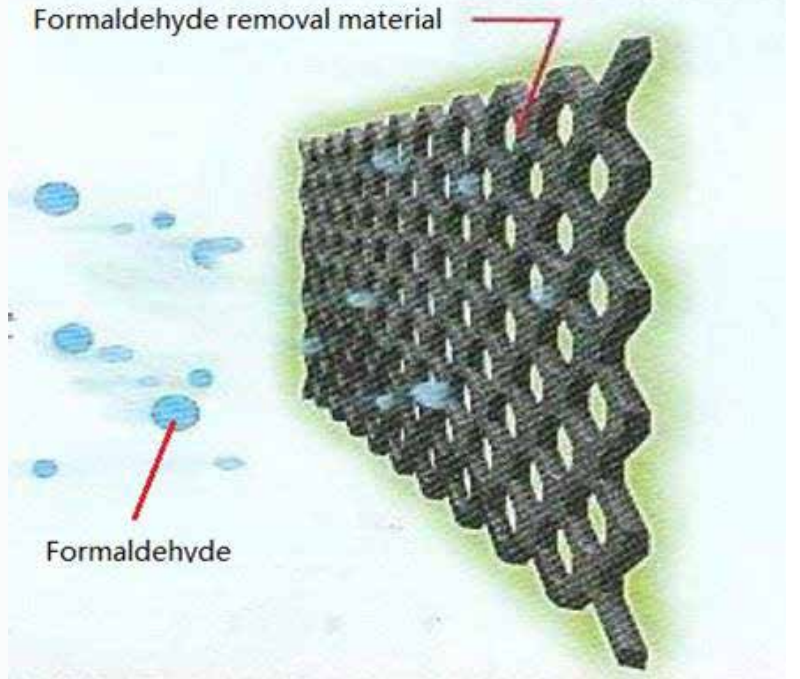
HD filter of mini split : 48*37 Yarn/inch (± 2 Yarn/inch), yarn diameter : 0.12 \pm 0.01 mm

Cold Catalyst Filter

Component: PU polyurethane + multiple catalyst + fiber

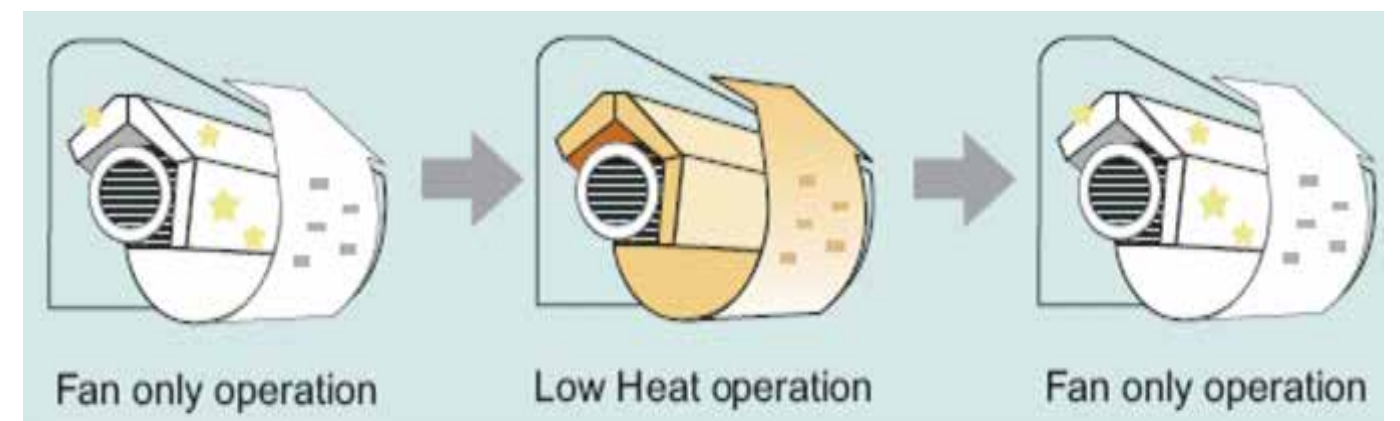
Effectively catch and remove formaldehyde and other volatile organic compounds (VOCs) as well as harmful gases and odors.

Catalyze formaldehyde or other VOCs make chemical reaction with the oxygen in the air, to generate H₂O and CO₂.



Self-Clean

- ❖ Self Clean function enables drying the indoor coil after Cool or Dry mode to avoid mold.
- ❖ Press CLEAN button in Cool (including cooling in auto mode and forced cooling mode) or Dry mode to enable self-clean function, "SC" will show in indoor display.



Regular Series

Model			CWMN-YMi09S-J	CWMN-YMi12S-J	CWMN-YMi18S-J	CWMN-YMi24S-J
Power supply	Ph-V-Hz		220-240V,1Ph,50Hz	220-240V,1Ph,50Hz	220-240V,1Ph,50Hz	220-240V,1Ph,50Hz
Rated Cooling	Capacity	Btu/h	9000 (3500~11000)	12000 (4700~14700)	18000(11570~20130)	24000(7200-28000)
Cooling Power input		W	733 (80~1100)	1096 (120~1650)	1550(560~2050)	2402(420-3200)
Cooling Current		A	3.18 (0.35~4.78)	4.76 (0.5~7.2)	6.7(2.4~9)	10.5(1.8-13.9)
	EER	W/W	3.6	3.21	3.40	2.91
Rated Heating	Capacity	Btu/h	10000 (2800~11500)	13000 (3650~14950)	19000(10580~19960)	25000(5300-28000)
Heating Power input		W	771 (70~990)	1027 (110~1480)	1750(780~2000)	2130(300-3100)
Heating Current		A	3.35 (0.32~4.32)	4.46 (0.5~6.4)	7.6(3.4~8.7)	9.3(1.3-13.5)
	COP	W/W	3.8	3.71	3.71	3.44
Seasonal Cooling	Pdesignc	kW	2.8	3.6	5.3	7.0
	SEER	W/W	7.4	7.0	7.0	6.4
	Energy Efficiency Class		A++	A++	A++	A++
Heating(Average)	Pdesignh	kW	2.5	2.5	4.2	4.9
	SCOP	W/W	4.1	4.2	4.0	4.0
	Energy Efficiency Class		A+	A+	A+	A+
Heating(Warmer)	Tbiv	°C	-7	-7	-7	-7
	Pdesignh	kW	2.5	2.5	4.5	5.3
	SCOP	W/W	5.3	5.5	5.1	5.1
Heating(Colder)	Energy Efficiency Class		A+++	A+++	A+++	A+++
	Tbiv	°C	2	2	2.0	2
	Pdesignh	kW	3.8	3.8	6.7	10.8
Heating(Colder)	SCOP	W/W	3.1	3.4	3.1	2.8
	Energy Efficiency Class		B	B	B	C
	Tbiv	°C	-10	-10	-10	-10
	Tol	°C	-15	-15	-15	-15
Max. input consumption	W		2150	2150	2500	3700
Max. current	A		10	10	13	19
Indoor						
Indoor fan motor	Model		ZKFP-20-8-6-7	ZKFP-13-8-4	ZKFP-30-8-3	ZKFP-58-8-1-5
	Input	W	50	40.0	36.0	58
Indoor air flow (Hi/Mi/Lo)	m³/h		520/460/330	530/400/350	800/600/500	1090/770/610
Indoor noise level (Hi/Mi/Lo/Si)	dB(A)		37/32/22/20	37/32/22/21	41/37/31/20	46/37/34.5/21
Indoor sound power level	dB(A)		54	56	56	62
Thermostat type			Remote Control	Remote Control	Remote Control	Remote Control
Room temperature	Indoor(cooling/heating)	°C	17~32/0~30	17~32/0~30	17~32/0~30	17~32/0~30
	Outdoor(cooling/heating)	°C	-15~50/-15~24	-15~50/-15~24	-15~50/-15~24	-15~50/-15~24
Indoor unit	Dimension(W*D*H)	mm	726x210x291	835x208x295	969*320*241	1083*336*244
	Packing (W*D*H)	mm	790x270x375	905x290x355	1045*405*315	1155*415*315
	Net/Gross weight	Kg	8/10.5	8.7/11.5	11.2/14.6	13.6/17.3
Outdoor						
Compressor	Model		KSK103D33UEZ3(YJ)	KSK103D33UEZ3(YJ)	KSN140D21UFZ	KTM240D57UMT
	Type		Rotary	Rotary	ROTARY	Rotary
	Brand		GMCC	GMCC	GMCC	GMCC
Outdoor fan motor	Model		ZKFN-20-8-1	ZKFN-20-8-1	ZKFN-34-10-1	ZKFN-80-8-3
	Speed	r/min	800/450	800/450	760/650	830/550
Outdoor air flow	m³/h		1850	1850	2100	3500
Outdoor sound pressure level	dB(A)		56	55	57	60
Outdoor sound power level	dB(A)		62	62	65	67
Outdoor unit	Dimension(W*D*H)	mm	720x270x495	720x270x495	874*330*554	955*342*673
	Packing (W*D*H)	mm	835x300x540	835x300x540	915*370*615	995*398*740
	Net/Gross weight	Kg	23.5/25.4	23.7/25.5	33.5/36.1	43.9/46.9
Refrigerant	Type		R32	R32	R32	R32
	GWP		675	675	675	675
	Charged quantity	Kg	0.6	0.65	1.1	1.45
Design pressure	MPa		4.3/1.7	4.3/1.7	4.6/1.7	4.6/1.7
Refrigerant piping	Liquid side/ Gas side	mm(inch)	Ø6.35mm(1/4in)/Ø9.52mm(3/8in)	Ø6.35mm(1/4in)/Ø9.52mm(3/8in)	Ø6.35mm(1/4in)/Ø12.7mm(1/2in)	Ø9.52mm(3/8in)/Ø15.9mm(5/8in)
	Max. refrigerant pipe length	m	25	25	30	50
	Max. difference in level	m	10	10	20	25
Connection wiring			1.5x5	1.5x5	1.5x5	2.5x5(Optional)
Plug type			1.5x3/no-plug	1.5x3/no-plug	1.5x3/no-plug	2.5x3/no-plug
Application area (Cooling Standard)	m²		12~18	16~23	24~35	32~47

High Efficiency Series

Model			CWMN-YMi09S-J(H)	CWMN-YMi12S-J(H)	CWMN-YMi18S-J(H)	CWMN-YMi24S-J(H)
Power supply	Ph-V-Hz		220-240V,1Ph,50Hz	220-240V,1Ph,50Hz	220-240V,1Ph,50Hz	220-240V,1Ph,50Hz
Rated Cooling	Capacity	Btu/h	9300 (4500~13000)	12000 (4500~13500)	18000 (12800~20900)	24000(7200~28000)
Cooling Power input		W	600 (130~1200)	880 (130~1250)	1318 (587~1787)	1760(420~3200)
Cooling Current		A	2.66 (0.6~5.35)	3.9 (0.6~5.55)	5.73 (2.81~7.90)	7.7(1.8~13.9)
	EER	W/W	4.54	4.0	4.0	4.0
Rated Heating	Capacity	Btu/h	10700 (3000~15000)	13500 (3000~15500)	19000 (8800~23100)	25000(5300~28000)
Heating Power input		W	690 (120~1400)	990 (120~1450)	1500 (943~1695)	1975(300~3100)
Heating Current		A	3.05 (0.6~6.2)	4.4 (0.6~6.4)	6.52 (4.26~7.50)	8.6(1.3~13.5)
	COP		4.54	4.0	3.71	3.71
Seasonal Cooling	Pdesignc	kW	2.6	3.5	5.3	7
	SEER	W/W	8.6	8.5	8.5	8.5
	Energy Efficiency Class		A+++	A+++	A+++	A+++
Heating(Average)	Pdesignh	kW	2.4	2.4	4.3	5.0
	SCOP	W/W	4.6	4.6	4.3	4.2
	Energy Efficiency Class		A++	A++	A+	A+
Heating(Warmer)	Tbiv	°C	-7	-7	-7	-7
	Pdesignh	kW	2.4	2.5	4.3	5.5
	SCOP	W/W	5.1	5.1	5.4	5.3
Heating(Colder)	Energy Efficiency Class		A+++	A+++	A+++	A+++
	Tbiv	°C	2	2	2	2
	Pdesignh	kW	3.8	3.8	6.7	10.8
Heating(Colder)	SCOP	W/W	3.1	3.4	3.1	2.8
	Energy Efficiency Class		B	B	B	C
	Tbiv	°C	-10	-10	-10	-10
	Tol	°C	-15	-15	-15	-15
Max. input consumption	W		2300	2300	2800	3700
Max. current	A		10.5	10.5	13.0	19
Indoor						
Indoor fan motor	Model		ZKFP-20-8-6-7	ZKFP-20-8-6-7	ZKFP-30-8-3	ZKFP-58-8-1-5
	Input	W	50.0	50.0	36.0	58.0
	Speed(Hi/Mi/Lo)	r/min	960/830/630	1000/850/700	1050/882/714	1000/850/700
Indoor air flow (Hi/Mi/Lo)	m³/h		530/360/280	560/380/290	685/580/400	1092/724/379
Indoor noise level (Hi/Mi/Lo/Si)	dB(A)		37/32/21.5/20.5	40/33/22/21	41/35/23/22	44.5/40/33/21
Indoor sound power level	dB(A)		58	59	59	65
Thermostat type			Remote Control	Remote Control	Remote Control	Remote Control
Room temperature	Indoor(cooling/heating)	°C	16~32/0~30	16~32/0~30	16~32/0~30	16~32/0~30
	Outdoor(cooling/heating)	°C	-15~50/-20~24	-15~50/-20~24	-15~50/-20~24	-15~50/-20~24
Indoor unit	Dimension(W*D*H)	mm	795x225x295	795x225x295	965x239x319	1140x370x275
	Packing (W*D*H)	mm	870x370x305	870x370x305	1045x400x325	1230x455x355
	Net/Gross weight	Kg	10.2/13	10.2/13	12.3/16.4	20/25.3
Outdoor						
Compressor	Model		KSN98D22UFZ	KSN98D22UFZ	KSN140D58UFZ	KTM240D43UKT
	Type		ROTARY	ROTARY	ROTARY	ROTARY
	Brand		GMCC	GMCC	GMCC	GMCC
Outdoor fan motor	Model		ZKFN-34-10-1	ZKFN-34-10-1	ZKFN-80-8-3	ZKFN-80-8-3
	Speed	r/min	760/350	760/350	700/530	830/700/550
Outdoor air flow	m³/h		2200	2200	3500	3500
Outdoor sound pressure level	dB(A)		57	57.5	56	58.5
Outdoor sound power level	dB(A)		64	65	65	68
Outdoor unit	Dimension(W*D*H)	mm	805x330x554	805x330x554	890x342x673	890x342x673
	Packing (W*D*H)	mm	915x370x615	915x370x615	995x398x740	995x398x740
	Net/Gross weight	Kg	28.4/31	28.4/31	38.8/41.9	45.6/48.8
Refrigerant	Type		R32	R32	R32	R32
	GWP		675	675	675	675
	Charged quantity	Kg	0.69	0.69	1.1	1.5
Design pressure	MPa		4.3/1.7	4.3/1.7	4.3/1.7	4.3/1.7
Refrigerant piping	Liquid side/ Gas side	mm(inch)	6.35mm(1/4in)/9.52mm(3/8in)	6.35mm(1/4in)/9.52mm(3/8in)	6.35mm(1/4in)/12.7mm(1/2in)	9.52mm(3/8in)/15.9mm(5/8in)
	Max. refrigerant pipe length	m	25	25	30	50
	Max. difference in level	m	10	10	20	25
Connection wiring			1.5x5	1.5x5	1.5x5	2.5x5
Plug type			no-plug	no-plug	no-plug	no-plug
Application area (Cooling Standard)	m²		12~18	16~23	24~35	32~47

A6 Ducted Split Air Conditioners

High Static Pressure

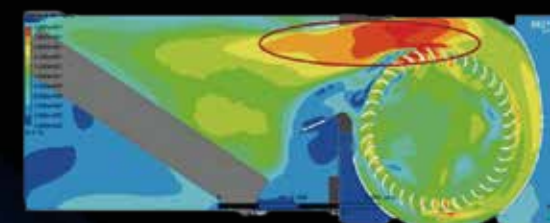
Capable to be installed in various applications that requires static pressure of 160 Pa (48/60K).



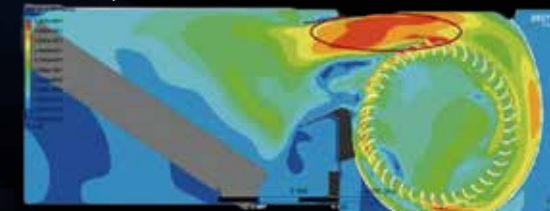
Eccentric Fan Design

New eccentric fan design improves the airflow at the air outlet, resulting better performance.

A6 Duct



Ordinary Duct



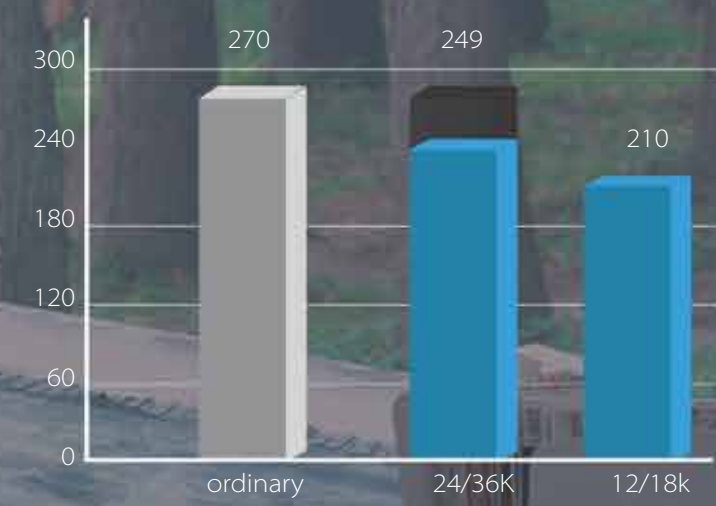


Convenience

Slim Design

The industry lowest height is designed to be fitted into tight roof space.

(Body Height/mm)



Flexible Installation

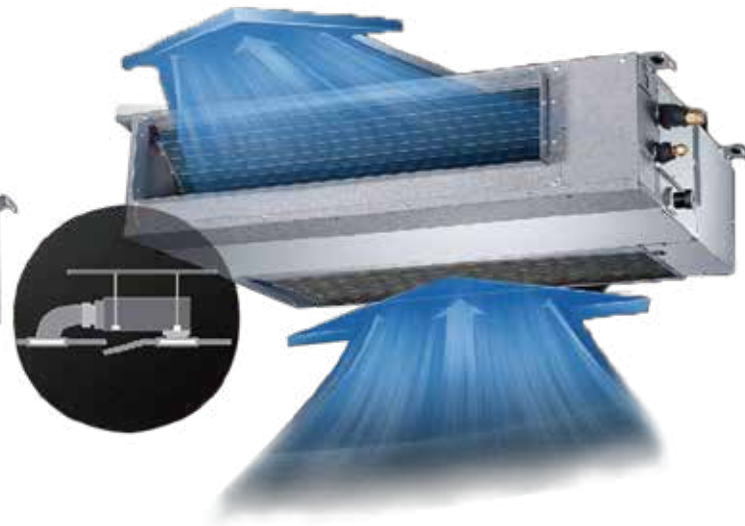
Flexible Air Intake

The frame size of air inlet in rear and bottom is the same. It's very easy to switch to match different applications.

Air intake from rear
(Standard)

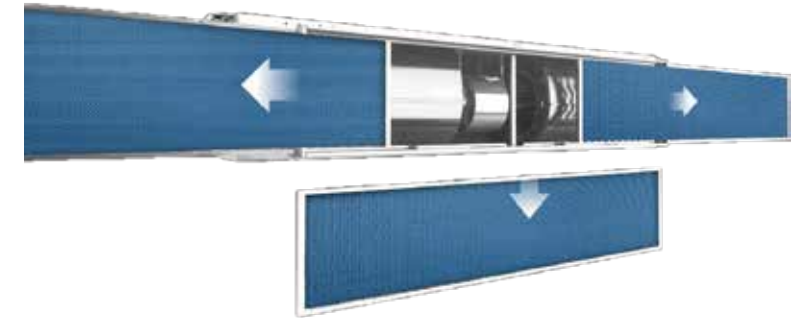


Air intake from bottom
(Optional)



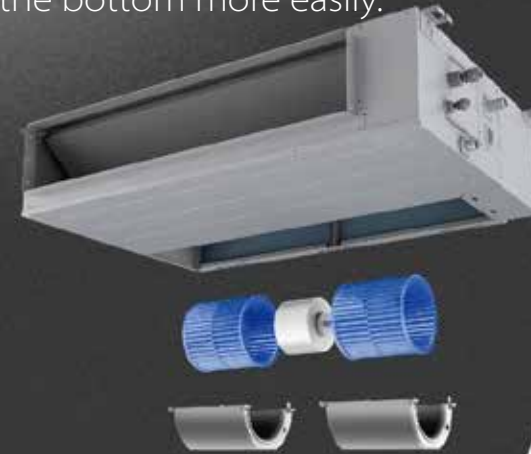
Easy Clean

You can pull out the filter from left, right, or from the bottom for easy cleaning.



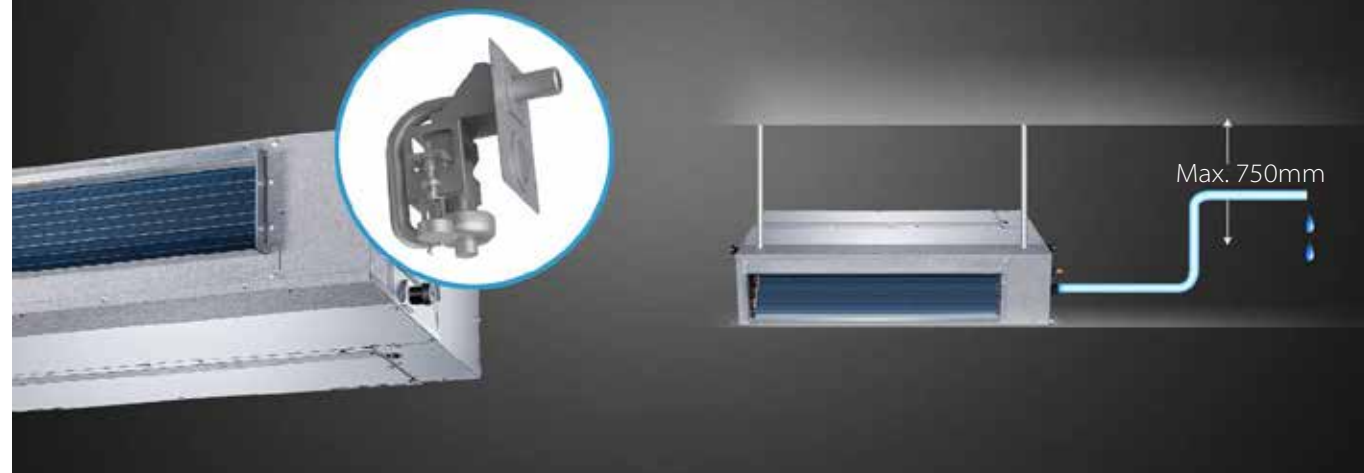
Easy Maintenance

A6 duct allows operators maintain the motor from the bottom more easily.



Built-in Drain Pump (optional)

The built-in drain pump can lift condensing water up to 750mm.



Easy Maintenance

A6 duct has big space for maintenance at the side.



Split A6 ducted Unit

Model		CMN-YMi12S-J	CMN-YMi18S-J	CMN-YMi24S-J	CMN-YMi30S-J	
Power supply (Indoor)	V,Hz,Ph	220-240V,1Ph, 50Hz	220-240V,1Ph, 50Hz	220-240V,1Ph, 50Hz	220-240V,1Ph, 50Hz	
Power supply (Outdoor)	V,Hz,Ph	220-240V,1Ph, 50Hz	220-240V,1Ph, 50Hz	220-240V,1Ph, 50Hz	220-240V,1Ph, 50Hz	
Max. input consumption	W	1850	2950	3700	4500	
Max. current	A	9	13.5	19	20	
Cooling	Capacity	Btu/h	12000 (1800~13607)	18000 (8700~20000)	24000 (11180~27830)	30000 (7600~33600)
	Capacity	kW	3.52(0.53~3.99)	5.28(2.55~5.86)	7.03(3.28~8.16)	8.79 (2.23~9.85)
	Input	W	1053 (155~1373)	1530 (710~2150)	2190 (750~2960)	2500 (190~3050)
	Current	A	4.75 (1.3~6.09)	7.1 (3.2~9.56)	10.2 (4.2~13.2)	11.0 (2.0~13.5)
Heating	Capacity	Btu/h	13000 (3400~14975)	19000 (7500~21000)	26000 (9580~28954)	32000 (9200~34200)
	Capacity	kW	3.81(1.00~4.39)	5.57(2.20~6.15)	7.62(2.81~8.49)	9.38 (2.70~10.02)
	Input	W	1038 (302~1390)	1510 (740~1760)	1900 (640~2580)	2250 (430~2450)
	Current	A	4.52 (1.48~6.15)	6.8 (3.3~7.7)	9.2 (3.8~11.6)	10.0 (3.0~10.7)
Indoor						
Indoor fan motor	Model		ZKFN-55-8-22-1	ZKFN-160-8-1-2	ZKFN-160-8-1-2	ZKFN-300-8-1
	Qty		1	1	1	1
	Input	W	130	90	90	250
Indoor air flow	m³/h	600/480/300	911/706.3/515.2	1229/1035/825.1	2100/1800/1500	
ESP	Rated	Pa	25	25	25	37
	Range	Pa	0-60	0-100	0-160	0-160
Indoor sound pressure level	dB(A)	34.5/30.5/29/23	41/38/34/26	42/40/37/27	50/46.5/45/40.5	
Indoor sound power level	dB(A)	58	58	62	64	
Indoor unit	Dimension (WxDxH)	mm	700x506x200	880x674x210	1100x774x249	1360x774x249
	Packing(WxDxH)	mm	860x540x285	1070x725x280	1305x805x315	1570x805x330
	Net/Gross weight	kg	17.8/21.5	24.4/29.6	32.3/39.1	40.5/48.3
Design pressure	MPa	4.3/1.7	4.3/1.7	4.3/1.7	4.3/1.7	
Drainage water pipe diameter	mm	ODΦ25mm	ODΦ25mm	ODΦ25mm	ODΦ25	
Controller	Standard	Wire Control	Wired control	Wired control	Wired control	
Operation temperature	°C	16~30	16~30	16~30	16~30	
Room temperature	Cooling	°C	16~32	16~32	16~32	16~32
	Heating	°C	0-30	0-30	0-30	0-30
Outdoor						
Compressor	Model		KSN98D64UFZ3	KSN140D21UFZ	KTM240D43UKT	KTM240D43UKT
	Type		ROTARY	ROTARY	ROTARY	ROTARY
	Brand		GMCC	GMCC	GMCC	GMCC
	Capacity	W	3100	4385	7600	7600
	Input	W	765	1140	2045	2045
	Rated current(RLA)	A	5	7.50	9.30	9.30
	Refrigerant oil/oil charge	ml	VG74/300	VG74/440	VG74/620	VG74/620
Outdoor fan motor	Model		ZKFN-34-10-1-3	ZKFN-34-10-1	ZKFN-80-8-3	ZKFN-120-8-2
	Old Model		ZKFN-34-10-1-3	ZKFN-34-10-1	WZDK80-38G-W(A)	WZDK120-38G-W
	Qty		1	1	1	1
	Input	W	34	34	150	150
Outdoor air flow		2200	2100	3500	3800	
Throttle type		EXV	EXV	EXV+Capillary	EXV	
Outdoor sound power level (Hi)	dB(A)	62	65	68	70	
Outdoor unit	Dimension(W*D*H)	mm	765x303x555	805x330x554	890x342x673	946x410x810
	Packing (W*D*H)	mm	887x337x610	915x370x615	995x398x740	1090x500x885
	Net/Gross weight	Kg	26.6/29	32.5/35.2	43.9/46.9	52.8/57.3
Refrigerant type	Type		R32	R32	R32	R32
	GWP		675	675	675	675
	Charged volume	Kg	0.72	1.15	1.5	2
Design pressure	MPa	4.3/1.7	4.3/1.7	4.3/1.7	4.3/1.7	
Refrigerant piping	Liquid side/ Gas side	mm(inch)	Φ6.35mm(1/4in) /Φ9.52mm(3/8in)	Φ6.35mm(1/4in) /Φ12.7mm(1/2in)	Φ9.52mm(3/8in) /Φ15.9mm(5/8in)	Φ9.52mm(3/8in) /Φ15.9mm(5/8in)
	Max. refrigerant pipe length	m	25	30	50	50
	Max. difference in level	m	10	20	25	25
Ambient temperature	Cooling	°C	-15~50	-15~50	-15~50	-15~50
	Heating	°C	-15~24	-15~24	-15~24	-15~24

Model		CMN-YMi36S-J	CMN-YMi36PS-J	CMN-YMi42S-J	CMN-YMi48PS-J	CMN-YMi55PS-J	
Power supply (Indoor)	V,Hz,Ph	220-240V,1Ph, 50Hz	220-240V,1Ph, 50Hz	220-240V,1Ph, 50Hz	220-240V,1Ph, 50Hz	220-240V,1Ph, 50Hz	
Power supply (Outdoor)	V,Hz,Ph	220-240V,1Ph, 50Hz	380-415V,3Ph, 50Hz	220-240V,1Ph, 50Hz	380-415V,3Ph, 50Hz	380-415V,3Ph, 50Hz	
Max. input consumption	W	5000	5000	5000	6900	7500	
Max. current	A	10	22.5	22.5	13	14	
Cooling	Capacity	Btu/h	36000 (9400~38000)	36000 (9300~40200)	41000 (10000~42000)	48000 (12000~53000)	52000 (14000~59000)
	Capacity	kW	10.55(2.75~11.14)	10.55 (2.73~11.78)	12.02(2.93~12.31)	14.07(3.52~15.53)	15.24(4.10~17.29)
	Input	W	3950 (900~4150)	4000 (890~4200)	4200 (680~4500)	4800 (880~6000)	5250 (1030~6650)
	Current	A	17.5 (4.2~18.5)	6.5 (1.4~6.7)	18.8 (3.1~19.8)	8.4 (1.9~10.4)	9.6 (3.1~11.5)
Heating	Capacity	Btu/h	40000 (9500~43600)	40000 (9500~43800)	46000 (11500~48000)	55000 (14000~62000)	62000 (15000~70000)
	Capacity	kW	11.72(2.78~12.78)	11.72 (2.78~12.84)	13.48(3.37~14.07)	16.12(4.10~18.17)	18.17(4.40~20.52)
	Input	W	3250 (800~3950)	3250 (780~4000)	3450 (750~4100)	4500 (950~5700)	5150 (950~6600)
	Current	A	14.5 (3.5~17.5)	5.3 (1.3~6.4)	15.5 (3.4~18.3)	8.0 (2.0~9.8)	9.5 (2~11.5)
Indoor							
Indoor fan motor	Model		ZKFN-300-8-1	ZKFN-300-8-1	ZKFN-560-8-1-1	ZKFN-560-8-1-1	ZKFN-560-8-1-1
	Qty		1	1	1	1	1
	Input	W	250	250	560	560	560
Indoor air flow	m³/h	2100/1800/1500	2100/1800/1500	2400/2040/1680	2400/2040/1680	2600/2210/1820	
ESP	Rated	Pa	37	37	50	50	50
	Range	Pa	0-160	0-160	0-160	0-160	0-160
Indoor sound pressure level	dB(A)	49.5/48/46/42	49.5/48/46/42.5	51.5/49/48/43	50/49/47/42	52.5/49/47	
Indoor sound power level	dB(A)	61	61	67	66	66	
Indoor unit	Dimension (WxDxH)	mm	1360x774x249	1360x774x249	1200x874x300	1200x874x300	1200x874x300
	Packing(WxDxH)	mm	1570x805x330	1570x805x330	1405x915x365	1405x915x365	1405x915x365
	Net/Gross weight	kg	40.5/48.2	40.5/48.2	47.6/55.8	47.6/55.8	47.4/56.1
Design pressure	MPa	4.3/1.7	4.3/1.7	4.3/1.7	4.3/1.7	4.3/1.7	
Drainage water pipe diameter	mm	ODΦ25mm	ODΦ25mm	ODΦ25mm	ODΦ25mm	ODΦ25mm	
Controller	Standard	Wired control	Wired control	Wired control	Wired control	Wired control	
Operation temperature	°C	16~30	16~30	16~30	16~30	16~30	
Room temperature	Cooling	°C	16~32	16~32	16~32	16~32	
	Heating	°C	0-30	0-30	0-30	0-30	
Outdoor							
Compressor	Model		KTF310D43UMT	KTF310D43UMT	KTF310D43UMT	KTQ420D1UMU	KTQ420D1UMU
	Type		ROTARY	ROTARY	ROTARY	ROTARY	ROTARY
	Brand		GMCC	GMCC	GMCC	GMCC	GMCC
	Capacity	W	10010	10010	10010	13700	13700
	Input	W	2765	2765	2765	3700	3700
	Rated current(RLA)	A	5.38	5.38	5.38	7.02	7.02
	Refrigerant oil/oil charge	ml	VG74/1000	VG74/1000	VG74/1000	VG74/1400	VG74/1400
Outdoor fan motor	Model		ZKFN-120-8-2	ZKFN-120-8-2	ZKFN-120-8-2	ZKFN-85-8-22-5	ZKFN-85-8-22-5
	Old Model		WZDK120-38G-W	WZDK120-38G-W	WZDK120-38G-W	ZKFN-85-8-22-5	ZKFN-85-8-22-5
	Qty		1	1	1	2	2
	Input	W	150	150	150	126	126
Outdoor air flow		4000	4000	4000	7500	7500	
Throttle type		EXV	EXV	EXV+Capillary	EXV+Capillary	EXV+Capillary	
Outdoor sound power level (Hi)	dB(A)	70	70	75	74	74	
Outdoor unit	Dimension(W*D*H)	mm	946x410x810	946x410x810	946x410x810	952x415x1333	952x415x1333
	Packing (W*D*H)	mm	1090x500x885	1090x500x885	1090x500x885	1095x495x1480	1095x495x1480
	Net/Gross weight	Kg	80.5/85	66.9/71.5	71.0/75.0	103.7/118.3	107.0/121.2
Refrigerant type	Type		R32	R32	R32	R32	R32
	GWP		675	675	675	675	675
	Charged volume	Kg	2.4	2.4	2.8	2.9	3.0
Design pressure	MPa	4.3/1.7	4.3/1.7	4.3/1.7	4.3/1.7	4.3/1.7	
Refrigerant piping	Liquid side/ Gas side	mm(inch)	Φ9.52mm(3/8in) /Φ15.9mm(5/8in)	Φ9.52mm(3/8in) /Φ15.9mm(5/8in)	Φ9.52mm(3/8in) /Φ15.9mm(5/8in)	Φ9.52mm(3/8in) /Φ15.9mm(5/8in)	Φ9.52mm(3/8in) /Φ15.9mm(5/8in)
	Max. refrigerant pipe length	m	75	75	75	75	75
	Max. difference in level	m	30	30	30	30	30
Ambient temperature	Cooling	°C	-15~50	-15~50	-15~50	-15~50	-15~50
	Heating	°C	-15~24	-15~24	-15~24	-15~24	-15~24