

COMMODORE MAXI



CAST IRON OIL FIRED BOILER
RATED OUTPUT: 500 TO 1.400 KW
170 TO 480.000 BTU



WARMTH AT YOUR FINGERTIPS



FOR MAXIMUM CONFORT
AND EFFICIENCY

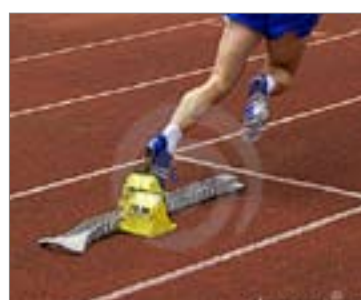


ROBUST AND
DURABLE QUALITY



EASY TO INSTALL

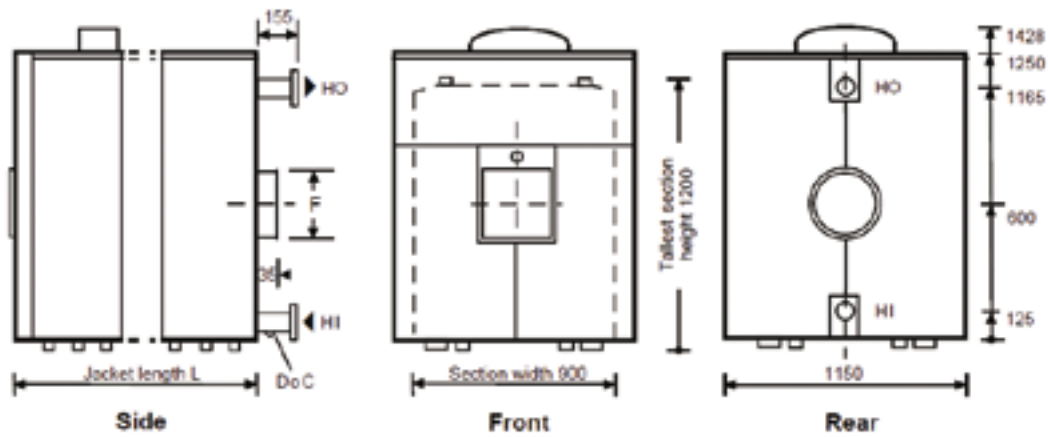
Together, preserve the future of our children



HIGH EFFICIENCY CAST IRON
SECTIONAL BOILER



TOP TECHNOLOGY
BY DESIGN



COMMODORE MAXI		7	8	9	10	11	12	13	14	15	16
Elements		7	8	9	10	11	12	13	14	15	16
Nominal Power Output	Kcal/h	431.300	515.900	593.300	670.700	748.100	825.500	911.400	997.400	1.100,602	1.203,783
Nominal Power Output	kW	501,6	600,0	690,0	780,0	870,0	960,0	1.060,0	1.160,0	1.280,0	1.400,0
Input Power	Kcal/h	482.425	573.222	657.761	742.746	826.630	911.148	1.004,851	1.099,669	1.213,413	1.327,170
Input Power	kW	561,06	666,70	765,00	863,80	961,40	1.059,7	1.168,6	1.278,9	1.411,2	1.543,5
Efficiency	%	89,40	90,00	90,20	90,30	90,50	90,60	90,70	90,70	90,70	90,70
Oil Consumption	Kg/h	47,121	56,360	64,680	73,030	81,280	89,590	98,800	108,130	-	-
Natural Gas Consumption	m ³ /h	56,10	67,09	77,00	86,94	96,76	106,65	117,62	128,72	139,70	152,80
Flue Gas ΔT (Water temperature 80°C)		215,8	209,0	205,0	202,0	199,0	196,0	196,0	195,0	205,0	205,0
Combustion Chamber Pressure	mm H ₂ O	8,0	15,0	30,0	33,0	42,0	51,0	60,0	69,0	80,0	93,0
Combustion Chamber Volume	lt	320	370	420	470	520	570	620	670	720	770
Water Capacity	lt	305,0	350,0	395,0	440,0	485,0	530,0	575,0	620,0	665,0	710,0
Weight	Kg	2.015	2.260	2.510	2.715	2.960	3.210	3.450	3.695	3.940	4.185
Hot/Cold Water Pipe Diameter	inch	DN 100									
Exhaust Pipe	mm	350	350	350	350	400	400	400	400	400	400
Jacket Length L	mm	1440	1620	1800	1980	2160	2340	2520	2700	2880	3060
Flue Gas Exit Diameter F	mm	350	350	350	350	400	400	400	400	400	400



Rue de la Gare 36 - B-5660 COUVIN
 Tel.: +32 (0)60/34 56 51
 Fax: +32 (0)60/34 62 28
 info@saintrochcouvin.com

www.saint-roch-couvin.com

YOUR DISTRIBUTOR

